



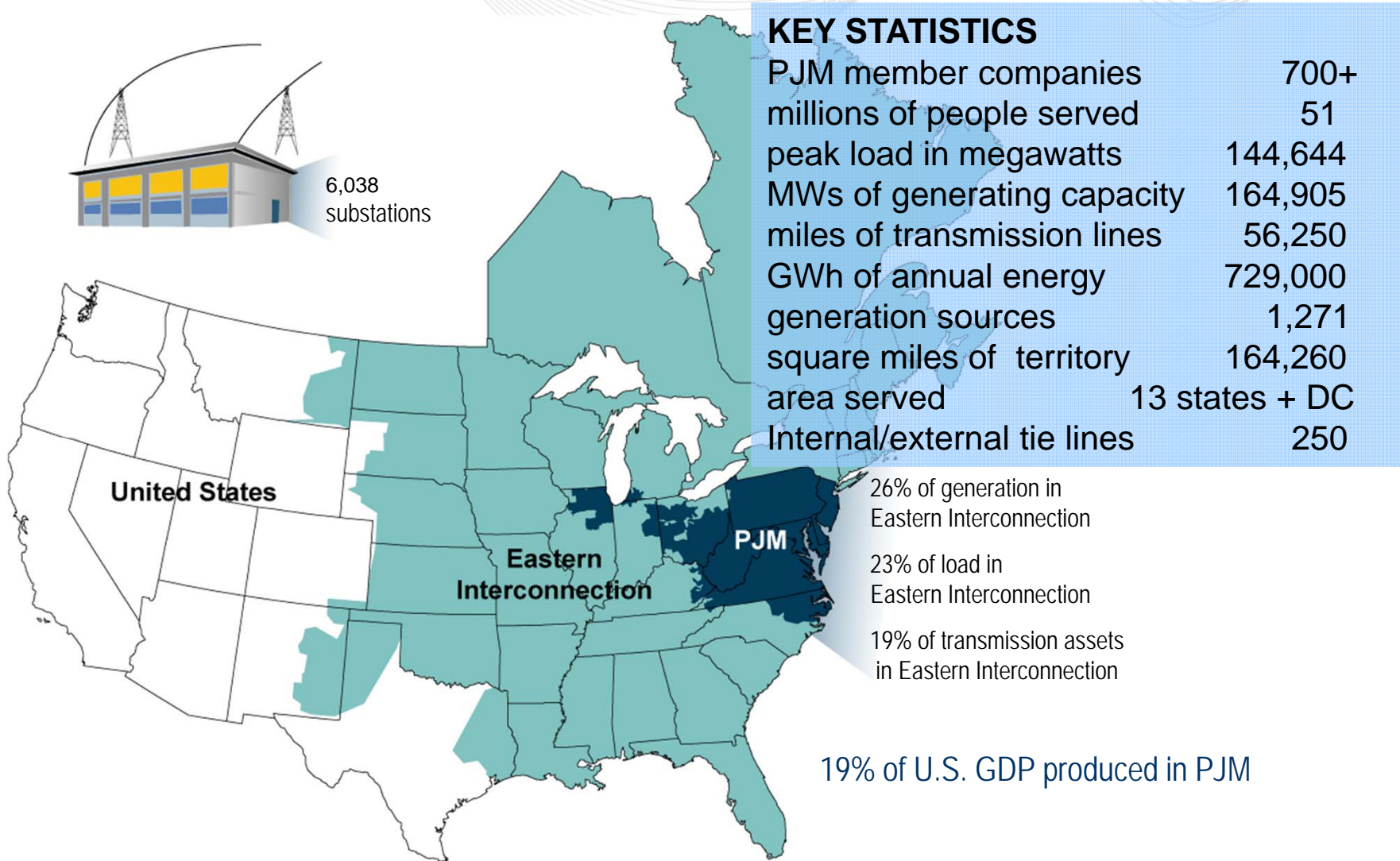
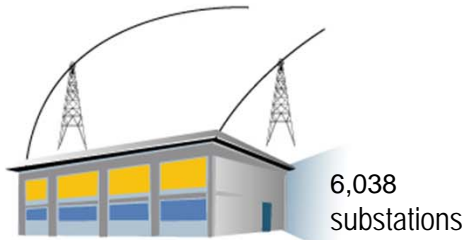
PJM Infrastructure Planning

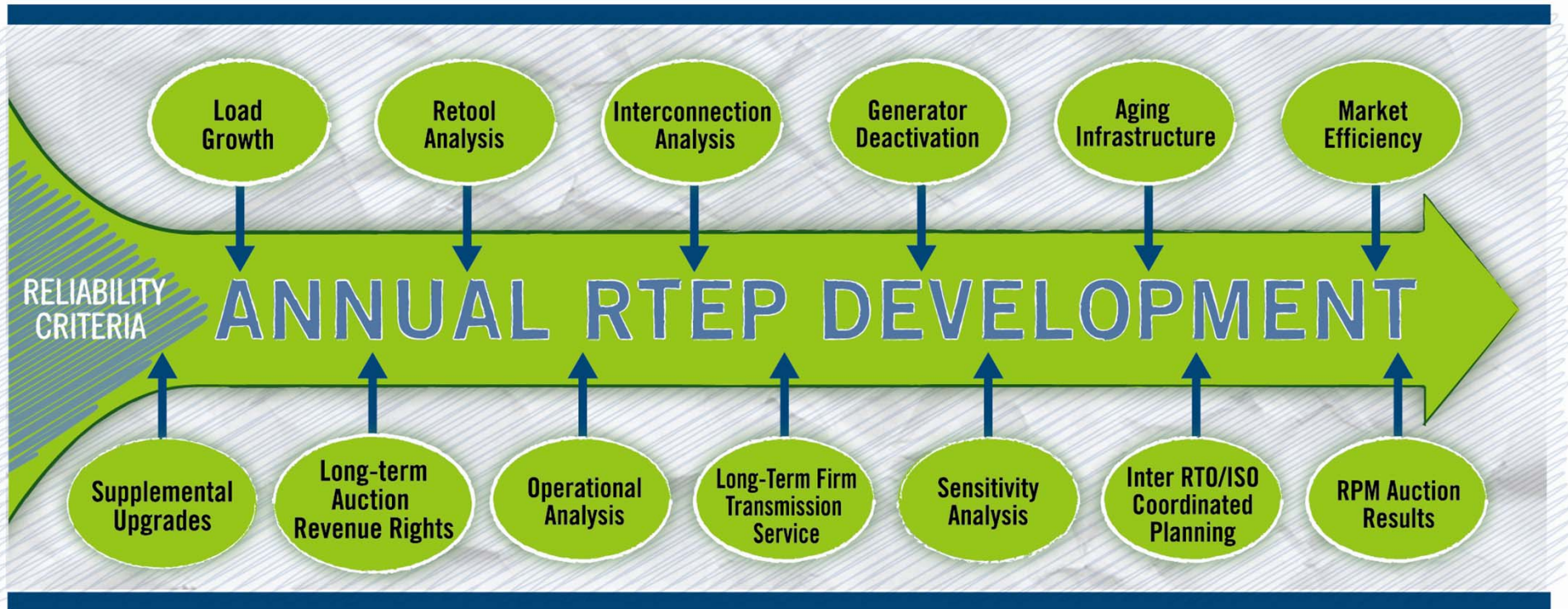
AABE National Conference
Jersey City, NJ
April 28, 2011

Steven R. Herling
Vice President, Planning
PJM Interconnection, L.L.C.



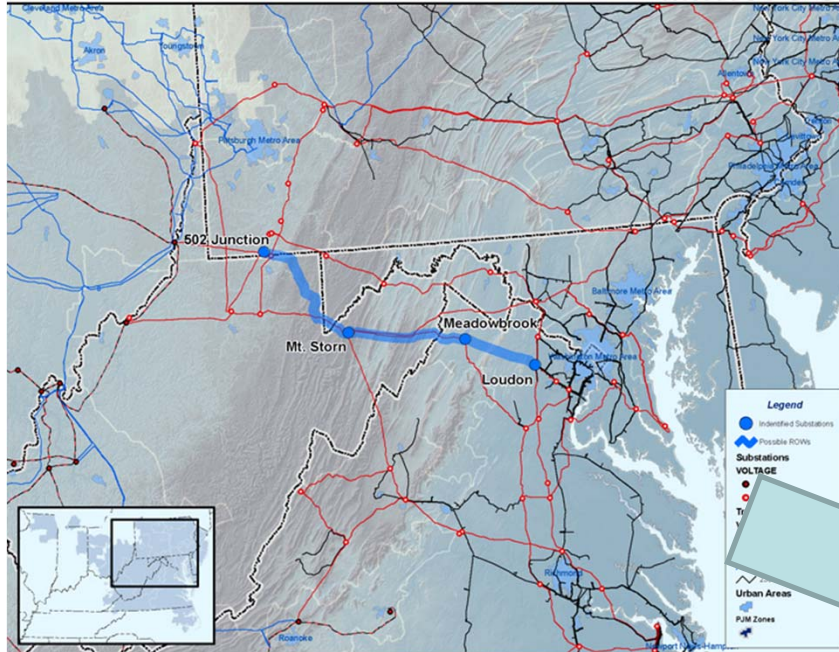
PJM as Part of the Eastern Interconnection



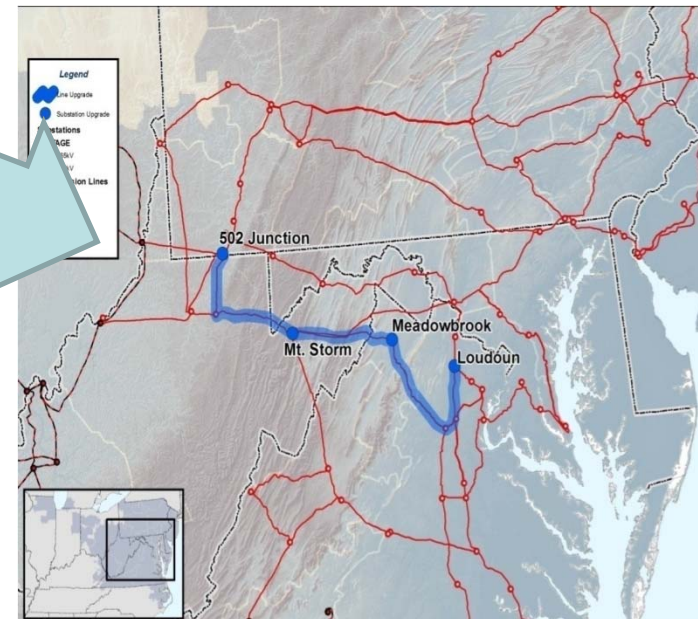


- PJM Planning Process implemented in 1997
 - Over 2500 discrete transmission projects approved
 - Over \$19 Billion of transmission infrastructure approved
 - Transmission projects facilitate the addition of 56,000 MW of new generation

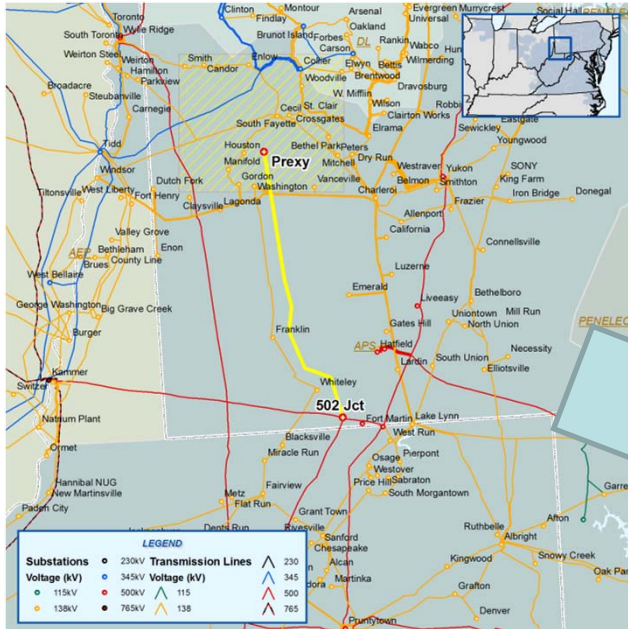
- **TrAIL Line**
 - Approved in 2006
 - 500 kV transmission line crossing PA, WV, and VA
 - Placed in service during April - May 2011
- **Carson – Suffolk Line**
 - Approved in 2006
 - 500 kV transmission in in southeastern VA
 - Placed in service in May 2011
- **Prexy Line**
 - Approved in 2006
 - 500 kV transmission line in southwestern PA
 - Replaced with multiple 138 kV network upgrades
 - In-service dates range from 2011 – 2013



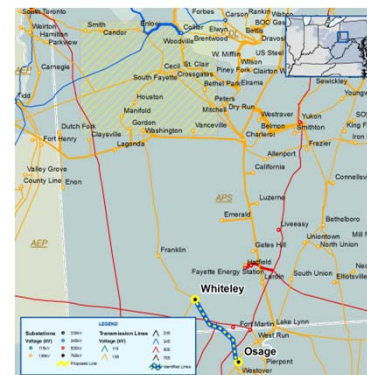
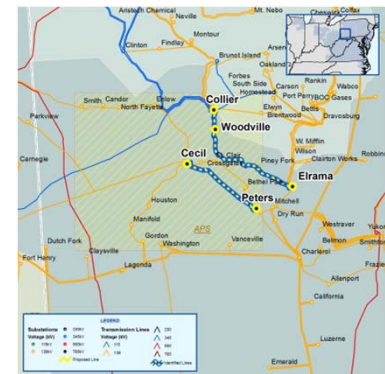
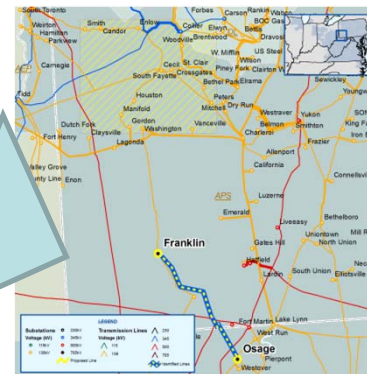
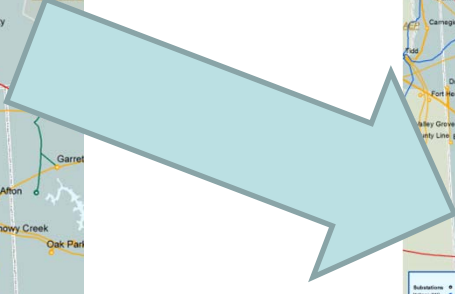
- Line crosses varied areas – rural to suburban
- Line re-routed to follow existing right-of-way to avoid sensitive historical areas
- Lengthy CPCN proceedings in PA, WV, and VA (personally testified for over 20 hours in VA)



- Needs are widespread across northern VA, Washington DC, and all of eastern Mid-Atlantic states
- Line segments being energized, as required, in April and May 2011



- Line crosses primarily rural areas
- Needs are all local to southwestern PA and neighboring states
- PA CPCN proceeding covered both TrAIL and Prexy



- Resolution of issues was deferred, in part, to a planning collaborative of local stakeholders – remaining issues were returned to the PJM planning process
- 500 kV project replaced by multiple 138 kV projects
- Implementation has been delayed beyond required in-service dates

Carson – Suffolk 500 kV

- Needs are all local to southeastern VA
- Utilizes existing and new rights-of-way
- Area is largely rural
- VA CPCN hearing took less than one hour
- Line will be placed in service, as required, in May 2011

